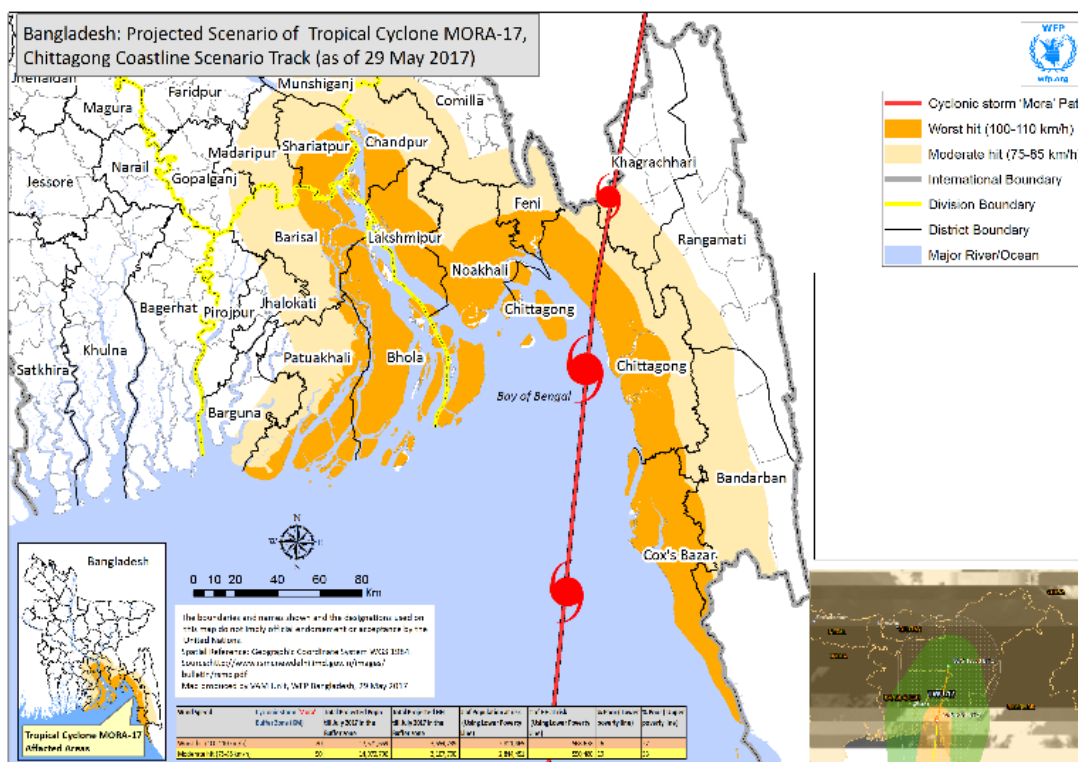


Overview of Cyclonic Storm Mora, June 01, 2017

Depression on the 28th May 2017 over southeast and adjoining central region of the Bay of Bengal strengthen into severe Cyclonic Storm Mora. It moved northwards and crossed Cox's Bazar – Chittagong coast near Kutubdia during 06 am to 12 pm on 30 May, 2017. Then it became weaken gradually and remained over Rangamati region and adjoining area as a land deep depression. At the time of landfall, it has a sustained wind speed of 117 kmph rising to 146 kmph in gust.



On 29th May, Bangladesh Meteorological Department broadcast great danger signal number 10 for Chittagong and Cox's Bazar ports as well as Noakhali, Lakshmipur, Feni and Chandpur districts including nearby islands. In addition it broadcast great danger signal number 8 Mongla and Payra ports and Bhola, Barguna, Patuakhali, Barisal, Pirojpur, Jhalokati, Bagerhat, Khulna, Shatkhira and nearby islands.

Responding to the great danger signals, the Local Administration in the fifteen districts evacuated 470,359 people to 3,154 cyclone shelters (see details in the Annex-1).

Overall Impact Scenario of Cyclonic Storm Mora, 2017

From NDRCC report of May 31, 2017, overall impact scenario of Cyclonic Storm Mora is given in the following table. Although detailed information are not collected yet as the information collection process is not completed yet.

Districts	No. of Affected Upazilas	No. of Affected Unions	No. of Affected families	No. of Affected Population	No. of Affected households		No. of Death	No. of Injured	No. of Shelter	No. of Evacuated People
					Fully	Partially				
Chittagong	13	106		14250	2756	2596			538	125820
Cox's Bazar	8		52539	262695	17023	35516	4	60	296	159600

Districts	No. of Affected Upazilas	No. of Affected Unions	No. of Affected families	No. of Affected Population	No. of Affected households		No. of Death	No. of Injured	No. of Shelter	No. of Evacuated People
					Fully	Partially				
Noakhali	-	-	-	-	-	-	-	-	312	35000
Laxmipur	-	-	-	-	-	-	-	-	102	8924
Feni	-	-	-	-	-	-	-	-	88	250
Bhola	-	-	-	-	-	-	-	-	73	20000
Barisal	-	-	-	-	-	-	-	-		
Barguna	-	-	-	-	-	-	-	-	335	20000
Patuakhali	-	-	-	-	-	-	-	-	331	20205
Khulna	-	-	-	-	-	-	-	-	193	10000
Bagerhat	-	-	-	-	-	-	-	-	234	34000
Shatkhira	-	-	450	1800	-	450	-	-	159	16700
Chandpur	-	-	-	-	-	-	-	-	99	8730
Pirojpur	-	-	1500	7500	-	10	-	-	193	16740
Rangamati	20	-	-	-	150	1027	2	1	-	-
Total	31	106	54489	286245	19929	39599	6	61	2998	477669

Source: Impact and Allocation on Cyclonic Storm Mora of May 30, 2017, NDRCC Report, May 31, 2017

GoB Response in Cyclonic Storm Mora, 2017

The Government allocated assistance immediately to the Cyclonic Storm Mora affected people that include cash grant and food aid. DDM report on Government response is given below:

Districts	GR Cash (BDT)		GR Rice (MT)		C. I. Sheet	Cash for housing
	Allocated	Distributed	Allocated	Distributed		
Chittagong	1,500,000	-	200	-	-	-
Cox's Bazar	2,500,000	900,000	500	110	300	900,000
Noakhali	1,500,000	120,000	200	100	-	-
Laxmipur	1,200,000	150,000	100	30	-	-
Feni	1,100,000	-	100	-	-	-
Bhola	1,200,000	-	100	-	-	-
Barisal	600,000	-	50	-	-	-
Barguna	600,000	-	50	-	-	-
Patuakhali	700,000	-	150	-	-	-
Khulna	600,000	-	50	-	-	-
Bagerhat	700,000	-	50	-	-	-
Shatkhira	500,000	150,000	50	-	-	-
Chandpur	500,000	-	50	-	-	-
Pirojpur	500,000	100,000	50	50	-	-
Total	13,700,000	1,420,000	1,700	-	300	900,000

Source: Impact and Allocation on Cyclonic Storm Mora of May 30, 2017, NDRCC Report, May 31, 2017

Conclusion

Cyclonic Storm Mora developed rapidly and stuck Chittagong – Cox's Bazar districts severely. It damaged trees and houses and inundated crop field in the low lying areas. The local Administration promptly evacuated large numbers people to safety, Government of Bangladesh also allocated substantial volumes of GR cash and GR rice. However more intensive support is needed for the affected people, in particular, the households (both local and Undocumented Myanmar Nationals) that have lost their houses and household assets.

Media Coverage



May 31, 2017

ক্ষয়ক্ষতি ব্যাপক তবে ভাটার কারণে ঘটেনি জলোচ্ছাস ॥ মোরার ছোবল

”... .. ঘূর্ণিঝড়ে কক্সবাজার সদরে ১, চকরিয়ায় ৩, পেকুয়ায় ১, রাঙ্গামাটিতে ২ জন ও ভোলার মনপুরায় একটি শিশু প্রাণহানির খবর পাওয়া গেছে। উপকূল অতিক্রম করার পর মঙ্গলবার সন্ধ্যায় স্থলভাগে অবস্থান করছিল ঘূর্ণিঝড় মোরা।”

See more at:

[.http://www.dailyjanakantha.com/details/article/271658/%E0%A6%95%E0%A7%8D%E0%A6%B7%E0%A7%9F%E0%A6%95%E0%A7%8D%E0%A6%B7%E0%A6%A4%E0%A6%BF-%E0%A6%AC%E0%A7%8D%E0%A6%AF%E0%A6%BE%E0%A6%AA%E0%A6%95-%E0%A6%A4%E0%A6%AC%E0%A7%87-%E0%A6%AD%E0%A6%BE%E0%A6%9F%E0%A6%BE%E0%A6%B0-%E0%A6%95%E0%A6%BE%E0%A6%B0%E0%A6%A3%E0%A7%87-%E0%A6%98%E0%A6%9F%E0%A7%87%E0%A6%A8%E0%A6%BF-%E0%A6%9C%E0%A6%B2%E0%A7%8B%E0%A6%9A%E0%A7%8D%E0%A6%9B%E0%A7%8D%E0%A6%AC%E0%A6%BE%E0%A6%B8](http://www.dailyjanakantha.com/details/article/271658/%E0%A6%95%E0%A7%8D%E0%A6%B7%E0%A7%9F%E0%A6%95%E0%A7%8D%E0%A6%B7%E0%A6%A4%E0%A6%BF-%E0%A6%AC%E0%A7%8D%E0%A6%AF%E0%A6%BE%E0%A6%AA%E0%A6%95-%E0%A6%A4%E0%A6%AC%E0%A7%87-%E0%A6%AD%E0%A6%BE%E0%A6%9F%E0%A6%BE%E0%A6%B0-%E0%A6%95%E0%A6%BE%E0%A6%B0%E0%A6%A3%E0%A7%87-%E0%A6%98%E0%A6%9F%E0%A7%87%E0%A6%A8%E0%A6%BF-%E0%A6%9C%E0%A6%B2%E0%A7%8B%E0%A6%9A%E0%A7%8D%E0%A6%9B%E0%A7%8D%E0%A6%AC%E0%A6%BE%E0%A6%B8)



May 31, 2017

Cyclone Mora kills 9 in 4 districts

“At least nine people were killed and thousands of houses destroyed as severe cyclonic storm Mora tore through the southwest districts of Bangladesh on Tuesday.”

See more at: <http://www.dhakatribune.com/bangladesh/nation/2017/05/30/casualties-mora-coxs-bazar/>

As-it-happened: Cyclone Mora weakens over Rangamati, danger signals lowered

“The storm hit the coast between Cox’s Bazar and Chittagong in between 6am and 7am on Tuesday.”

See more at: <http://www.dhakatribune.com/bangladesh/environment/2017/05/29/signal-7-seaports-mora-nears-chittagong-port/>



May 30, 2017

Deadly Cyclone Mora hits Bangladesh with high winds and rain

“... .. Hundreds of houses were fully or partly damaged, the officials said. Significant damage is reported in refugee camps housing Rohingya Muslims from neighbouring Myanmar.”

See more at: <http://www.bbc.com/news/world-asia-40089409>

The Daily Star

May 30, 2017

Cyclone Mora: Bad weather to linger today

“... .. Cyclone Mora that made landfall in Bangladesh this morning plunging the coastal areas in gusty winds and heavy rain is likely to linger for at least 12 more hours.”

See more at: <http://www.thedailystar.net/country/cyclone-mora-met-office-weather-forecast-rain-wind-1412992>

Annex-1: Evacuation by Upazilas due to Cyclonic Storm Mora (According to DDM, 30 May, 2017)

District	Upazila	Total Population	No. of Shelter	Evacuated people
Cox's Bazar	Cox's Bazar Sadar	522435	16	15500
	Moheshkhali	321218	55	55000
	Kutubdia	x	121	40000
	Pekua	171538	40	11500
	Teknaf	264389	10	1000
	Chakaria	478465	35	15000
	Ramu	266640	8	1000
	Ukhia	207379	3	600
	Paurashava	x	8	20000
Chittagong	City Corporation	2552824	72	1350
	Bashkhali	431162	117	40000
	Sandwip	278605	108	59950
	Mirsharai	398716	75	250
	Anwara	259022	58	10000
	Patiya	528120	13	5300
	Karnafuli	x	13	5500
	Sitakunda	387832	59	3000
	Boalkhali	223125	8	300
	Chandanaish	233017	5	170
	Satkania	384806	3	x
	Rangunia	278619	3	x
	Fatikchhari	526003	2	x
	Raojan	322840	2	x
	Lohagara	279913	x	x
	Hathazari	431748	x	x
Feni	Chhagalnaiya	170524	10	x
	Daganbhuiya	216333	2	x
	Feni Sadar	512646	17	x
	Porshuram	11032	1	x
	Fulgazi	117755	1	x
	Sonagazi	427913	57	250
Laxmipur	Laxmipur Sadar	711646	12	1300
	Ramgati	271365	51	1224
	Ramganj	297192	2	x
	Raypur	286140	10	4600
	Komolnagar	231418	27	1800
Barguna	Amtali	182798	48	2866
	Barguna Sadar	261343	77	4597
	Bamna	79564	28	1672
	Betagi	117145	43	2568
	Patharghata	163927	90	5372
	Taltali	88004	49	2925
Chandpur	Chandpur sadar	36898	12	2720
	Haimchar	109575	20	500
	Matlab Uttar	254266	34	2545

District	Upazila	Total Population	No. of Shelter	Evacuated people
	Matlab Dhakshin	150768	33	2965
	Hajiganj	266585	x	x
	Sharasti	355115	x	x
	Kachua	355115	x	x
	Faridganj	361593	x	x
	Chadpur Paurashava	159021	x	x
	Faridganj Paurashava	35090	x	x
	Hajiganj Paurashava	63892	x	x
	Kachua Paurashava	27024	x	x
	Tengarchar Paurashava Matlab Uttar	24691	x	x
	Matlab Dhakshin Paurashava	69286	x	x
	Sharasti Paurashava	28286	x	x
Jhalkati	Jhalkati Sadar	216248	11	400
	kathalia	124271	12	500
	Nalchhiti	193556	10	500
	Rajapur	149112	12	300
Noakhali	Noakhali Sadar	525934	5	x
	Subarnachar	289514	86	14000
	Companiganj	250579	32	6000
	Kabirhat	196944	8	x
	Begumganj	549308	x	x
	Senbag	282898	x	x
	Sonaimuri	327194	x	x
	Chatkhil	233253	x	x
	Hatia	452463	120	15000
Pirojpur	Pirojpur Sadar	225156	19	5500
	Bhandariya	145233	53	4500
	Kaukhali	70368	10	490
	Mathbaria	253915	10	1200
	Nazirpur	166014	18	1500
	Nechharabad	202520	27	550
	Jianagar/ (Indurkhani)	98451	18	3000
Bhola	Bhola Sadar	430520	16	3000
	Daulatkhan	168567	7	1500
	Borhanuddin	233860	x	x
	Lalmohan	283889	4	1800
	Tazumuddin	126940	6	200
	Charfassion	456437	25	5000
	Monpura	76582	15	3000
Khulna	Khulna Sadar	377307	x	x
	Batiaghata	161700	x	x
	Dacop	166902	89	5790

District	Upazila	Total Population	No. of Shelter	Evacuated people
	Dighalia	138768	x	x
	Dumuria	321107	x	x
	Koyra	221335	73	1250
	Paikgachha	271343	57	1150
	Fultala	88308	x	x
	Terokhada	124149	x	x
	Rupsa	191517	x	x
Satkhira	Satkhira Sadar	480052	x	x
	Ashashuni	278987	24	700
	Debhata	130128	x	x
	Kolaroa	247436	x	x
	Kaliganj	285379	x	x
	Shyamnagar	330382	135	16000
	Tala	311236	x	x
Barisal	Agailjhara	155661	16	x
	Gouranadi	180369	15	x
	Hijla	174508	26	x
	Mehendiganj	333645	43	x
	Muladi	143283	11	x
	Babuganj	158598	13	x
	Bakerganj	369085	64	x
	Barisal Sadar	201255	11	x
	Ujirpur	193766	12	x
	Banaripara	154202	18	x
	City	258827	x	
Patuakhali	Baufal	316025	85	3005
	Dashmina	128128	19	2200
	Galachipa	272571	24	350
	Kalapara	247276	107	9200
	Mirzaganj	12640	31	900
	Patuakhali Sadar	329445	6	3100
	Dumki	73373	11	400
	Rangabali	103003	48	1040
Bagherhat	Bagherhat Sadar	266389	7	x
	Fakirhat	137789	5	x
	kachua	97011	8	x
	Mollarhat	130878	10	x
	Murrelganj	298576	42	5000
	Rampal	154965	26	3000
	Sharankhola	119084	82	16000
	Chitalmari	138810	20	x
Mongla	136588	34	10000	